

High Power

Power Splitter/Combiner



ZB4CS-700-10W

4 Way-0°

400 to 700 MHz

Maximum Ratings

Operating Temperature	-55°C to 90°C
Storage Temperature	-55°C to 100°C
Power Input (as a combiner)	10W max.
Internal Dissipation	8W max.

Features

- high isolation, 25 dB typ.
- good input matching VSWR, 1.14 typ.
- good output matching VSWR, 1.1 typ.

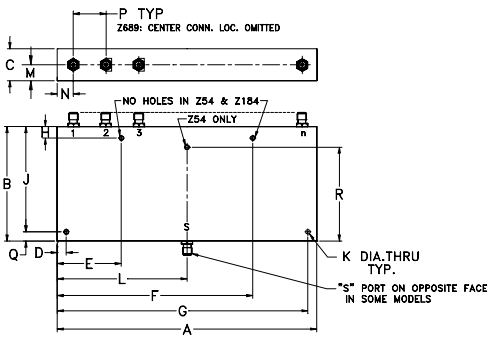


CASE STYLE: Z689
 PRICE: \$134.95 ea.
 QTY.: (1-9)

Applications

- UHF-TV/DTV

Outline Drawing



Outline Dimensions (inch mm)

A	B	C	D	E	F	G	H	
7.06	3.13	1.00	.250	1.430	5.630	6.810	.250	
179.32	79.50	25.40	6.35	36.32	143.00	172.97	6.35	
J	K	L	M	N	P		wt.	
2.875	.156	3.53	.44	.73	1.40		grams	
73.03	3.96	89.66	11.18	18.54	35.56		810	

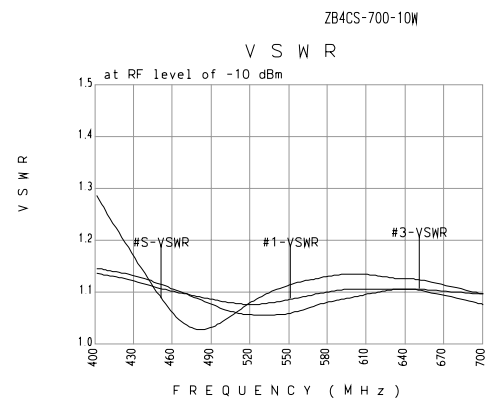
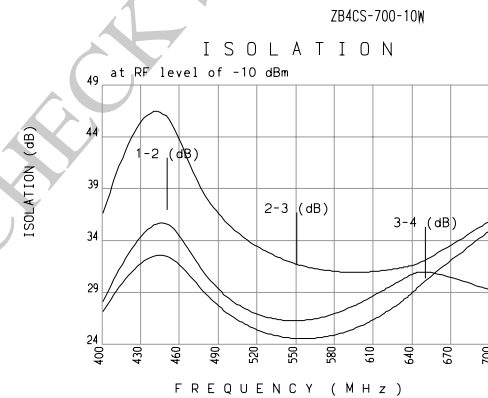
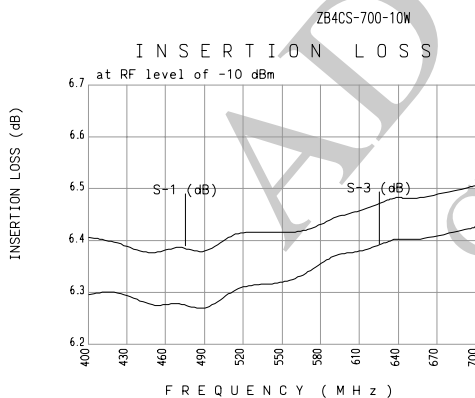
Electrical Specifications

FREQ. (MHz)	ISOLATION (dB)		INSERTION LOSS (dB) ABOVE 6 dB		PHASE UNBALANCE (Deg.)		AMPLITUDE UNBALANCE (dB)		POWER INPUT, W ¹	
	Typ.	Min.	Typ.	Max.	Typ.	Max.	Typ.	Max.	as combiner ² Max.	as splitter Max.
400 - 700	25	20	0.35	0.8	0.6	4	0.1	0.3	10	20

- ¹ Over -55°C to +55°C. Derate linearly to 20% of rating at 90°C.
- ² As a combiner of noncoherent signals, max. power per port is power rating divided by number of ports.

Typical Performance Data

Frequency (MHz)	Insertion Loss (dB)				Amplitude Unbalance (dB)	Isolation (dB)			Phase Unbalance (deg.)	VSWR S	VSWR 1	VSWR 2	VSWR 3	VSWR 4
	(dB) S-1	(dB) S-2	(dB) S-3	(dB) S-4		(dB) 1-2	(dB) 2-3	(dB) 3-4						
400.00	6.41	6.26	6.30	6.34	0.15	28.12	36.59	27.11	0.21	1.29	1.14	1.15	1.15	1.16
425.00	6.40	6.27	6.31	6.35	0.14	34.17	45.74	31.85	0.10	1.19	1.13	1.14	1.14	1.15
450.00	6.37	6.25	6.27	6.30	0.12	36.86	47.56	33.26	0.11	1.09	1.11	1.13	1.12	1.13
470.00	6.40	6.26	6.29	6.31	0.14	32.20	39.98	30.16	0.23	1.03	1.10	1.11	1.10	1.11
490.00	6.37	6.24	6.26	6.29	0.14	29.04	36.31	27.51	0.30	1.03	1.09	1.10	1.08	1.09
510.00	6.42	6.29	6.31	6.33	0.13	27.29	34.09	25.82	0.31	1.07	1.08	1.09	1.06	1.07
530.00	6.42	6.31	6.32	6.34	0.11	26.42	32.68	24.87	0.40	1.10	1.08	1.10	1.06	1.07
550.00	6.42	6.29	6.32	6.33	0.13	26.18	31.64	24.46	0.52	1.12	1.09	1.11	1.06	1.07
570.00	6.42	6.30	6.34	6.34	0.12	26.52	31.14	24.60	0.43	1.13	1.10	1.12	1.08	1.08
590.00	6.45	6.33	6.38	6.38	0.13	27.38	30.88	25.19	0.36	1.14	1.11	1.13	1.09	1.09
610.00	6.46	6.36	6.38	6.40	0.10	28.66	30.96	26.30	0.50	1.14	1.11	1.14	1.10	1.10
630.00	6.48	6.36	6.40	6.41	0.11	30.13	31.33	27.92	0.50	1.13	1.11	1.14	1.11	1.11
640.00	6.49	6.38	6.41	6.40	0.11	30.79	31.58	28.98	0.43	1.13	1.11	1.13	1.11	1.11
650.00	6.48	6.37	6.40	6.40	0.11	31.26	31.99	30.22	0.36	1.13	1.11	1.13	1.11	1.11
700.00	6.51	6.40	6.43	6.42	0.11	29.24	35.91	35.01	0.41	1.10	1.08	1.10	1.10	1.10



Distribution Centers NORTH AMERICA 800-654-7949 • 417 335-5935 • Fax 417-335-5945 • EUROPE 44-1252-832600 • Fax 44-1252-837010

INTERNET <http://www.minicircuits.com>

ISO 9001 CERTIFIED

REV. OR
 M72650
 ED-8021
 ZB4CS-700-10W
 HY/TD/CP
 000627